



## WHAT'S NEW AT N.E.W.?

*August, 2018*

### Presidential Ponderings

Dear N.E.W. Members and Friends,



Time flies when you're having fun and this year has certainly flown by! I am so proud to have served as your President this year and witnessed all the great accomplishments of your Board.

We have been quite busy working on your behalf and were successful in being awarded over \$6,000 from River City Givers, planning and implementing the Monster Bash and the Say What? Business Summit, organizing the Tacky Lights Tour, donating our time to Housing Families First, hosting the Holiday Bazaar, holding several Professional Development Workshops of great interest and finally awarding 7 High School Senior Girl Scholarships and one Sister Scholarship. Whew ... I cannot wait to see what next year has in store for us all!

Thank you again for giving me the honor of serving you and I look forward to many more years of successful N.E.W. endeavors and networking with a purpose.

Warmest regards,

*Stella*

#### Inside this Issue:

- **Membership**
- **Scholarship**
- **Professional Development**
- **Membership News**
- **Member Information**
- **Happy Birthdays**
- **Important Notes**
- **Advertising Rates**

*Are you keeping up with our website? Rather than sending you a million emails, please visit our [website](http://networkofenterprisingwomen.org) for the latest and greatest NEWS!*

**[networkofenterprisingwomen.org](http://networkofenterprisingwomen.org)**

# YOU ARE THE CEO OF YOUR LIFE!

Manage it well. Establish a balance between family, community, and career. Honor and treasure each aspect of your life. The rewards are great.



 **TOWNE BANK**  
RICHMOND

[townebank.com](http://townebank.com)

 MEMBER  
FDIC

### Exciting new perks for your membership!



**Mary Ashby**  
Membership

Miss a luncheon miss a lot!

Our membership co-chairmen, Mary Ashby and Amber Renick announced the new membership opportunities for the upcoming fiscal year at the August Luncheon. We hope that you will take advantage of these new perks.



**Amber Renick**  
Membership

- 1 - Bring three (3) different guests in any quarter and your next luncheon is on the house!
- 2 - If you get five (5) new members to join in the fiscal year (September 2018 to August 2019) you will earn a complimentary membership for the next year.
- 3 - Each member gets one free guest pass this year.
- 3 - Business memberships are now available!

A great benefit for any business owner - up to 4 employees may attend any N.E.W. event at the member pricing.

Contact [Membership](#) for more information or to request a Business membership.

### N.E.W. Testimonial Minute

Do you want to recognize a sister at our next luncheon for the great job she recently did for you? If so let Mary Ashby or Amber Renick know so that we can all celebrate our sisters.

AN EXTRAORDINARY DENTAL PRACTICE

**RANDAZZO** | DENTISTRY

Janine Randazzo, DMD & Janis Fuller, DDS

- In Office Dental Plan
- Early Morning and Evening appointments
- Ask about our VIP program

JRDENTISTRY.COM • 804.897.2900 • MIDLOTHIAN, VA

Veteran and Locally Owned and Operated





### Scholarship

As we start a new year it is never too soon to think about Scholarship!

There are many ways to support this important program but none are easier than the little things that you can do in your daily routine. We have registered with two fantastic programs that support non-profits and their fundraising efforts.

Amazon Smile and Kroger Rewards, now your everyday shopping and online shopping can support N.E.W. and it is easy to do!

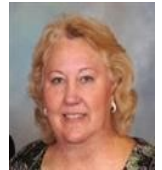
Simply register your Kroger rewards card and designate N.E.W. so that we can begin to receive donations.

And...

Bookmark this [Amazon Link](#) to use when you shop online

Share both with your family and friends too - no donation is ever too small.

Thank you and see you shopping soon!



**Margaret Hill**  
Philanthropy

### N.E.W.bies

**Diane Landon**

Diane comes to us through Sue Dunfee, so thank you Sue and welcome Diane!



**Hanover Education Foundation**

[www.hefhanover.com](http://www.hefhanover.com)

***People who are truly strong lift  
others up. People who are truly  
powerful bring others together.***

***~ Michelle Obama***



**RICH'S STITCHES INC.**

Chris Rich, Owner  
[chris@richsstitches.com](mailto:chris@richsstitches.com)

**804-262-3477**

**SCREEN PRINTING**

**EMBROIDERY**

**PROMOTIONAL ITEMS**

BUILDING YOUR BRAND SINCE 1988

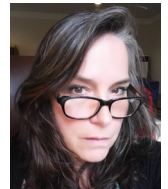
## Professional Development

### This year's Professional Development Chairmen



**Kyle Frayser**

We are excited to be working together on programming for N.E.W.



**Elizabeth Fleming**

This year we will start off our professional development year in October with a panel discussion on Leadership. The panel will consist of women sharing their experiences on navigating their leadership roles in today's ever changing business landscape.

March will bring another business summit - this year's focus will be a Business Health Assessment. Whether you are planning to start a new business or simply checking on your current one, this summit will have something for everyone.

May we plan on an evening event with a focus on young entrepreneurs - hearing from the next generation helps us all stay inspired and current with today's opportunities and business trends.

We will also be working with membership to bring in speakers, Top tips in Ten, and other monthly offerings to maximize the value of your N.E.W. membership.

Thank you and we look forward to serving you this year.



**Susie Hayman - August 3**

**Beth Arbogast - August 6**

**Carolyn Boone - August 26**

**Barbara Satterwhite - August 29**



*Harris*  
Administrative Services, LLC

**NEW MEMBERS - Do you know how to take advantage of our network?**

**Reach out to our**

**Mentor Committee**



**DEBBIE LANGE**

GRI, CRS, ABR, SRS, REALTOR®  
Multi-Million Dollar Producer

*The best compliment you can give me is your referral.*

**Cell: 804-337-1983**

DebbieLange@SRMFRE.com

DebbieLange.com



**SHAHEEN  
RUTH, MARTIN  
& FONVILLE**  
REAL ESTATE





# Dominion Payroll™

## *Empowering Your Business*

At Dominion Payroll, we make your tomorrow happen by empowering you today. We're not only a workforce management company; we're your partners, tailoring solutions custom-fitted to your business' unique needs with industry-leading software and exemplary support.

Empowering your business...that's our business.

That's Dominion Payroll.

<https://dominionpayroll.com>

3200 Rockbridge Street, Suite 300

Richmond, VA 23230 | 804.355.3430

### Member Information

#### The Holiday Bazaar is moving to November -

Get your holiday shopping prepared early!

Have products that you are looking to sell or know of anyone that would be an interested vendor?

Please have them contact Margaret Hill for Vendor rates.

[philanthropic@networkofenterprisingwomen.org](mailto:philanthropic@networkofenterprisingwomen.org)

Don't forget to pick up business cards from the display table at our luncheons so that you can hand out to friends and clients!

#### NEWSLETTER ADVERTISING RATES:

Advertising Rates Quarter Page

(2.5" x 2.25") - \$10.00/month

Half Page (7.5" x 5") - \$20.00/month

Full Page (7.5" x 10") - \$35.00/month

12th Month FREE with 1 year paid advertisement

Please provide ad in \*.jpg format.

For more information contact:

ExecutiveSecretary @NetworkofEnterprisingWomen.org



**SmartWire360**

ELECTRICAL & ENERGY SOLUTIONS

**804.746.0035**

**SMARTWIRE360.COM**



**edible**  
arrangements

**Better  
Homes**  
and Gardens.

REAL ESTATE

**BASE CAMP**

#### N.E.W. AND SOCIAL MEDIA

Are you engaging with us on Facebook? We have two groups:

**Closed Members Only Group:**

<https://www.facebook.com/groups/networkofEnterprisingWomen/>

**Public/Open Group:**

<https://www.facebook.com/NetworkofEnterprisingWomen/>

## Sponsor a NEW Luncheon

For \$150 you will receive:

- 2 minutes to talk about your business
- Can put marketing materials on the tables
- ½ page ad in newsletter for sponsored month
- Promo on FB page for sponsored month
- Verbally thanked at luncheon
- Includes luncheon fee for 1 person
- 2 sponsors per month max
- First come, first choice

Contact [Beth Aborgast](#) to set up your Sponsorship.

***"Being innovative in your philanthropy allows you to stride forward in your giving journey"***

***~ Laura Arrillaga-Andreessen***

